



CDMA CONFIGURATION

WIZARD PROPORSAL

Installation Components

- ❖ AIJI CDMA phone configuration
 - Phone installation as a modem
 - Phone configuration
 - Dialup configuration

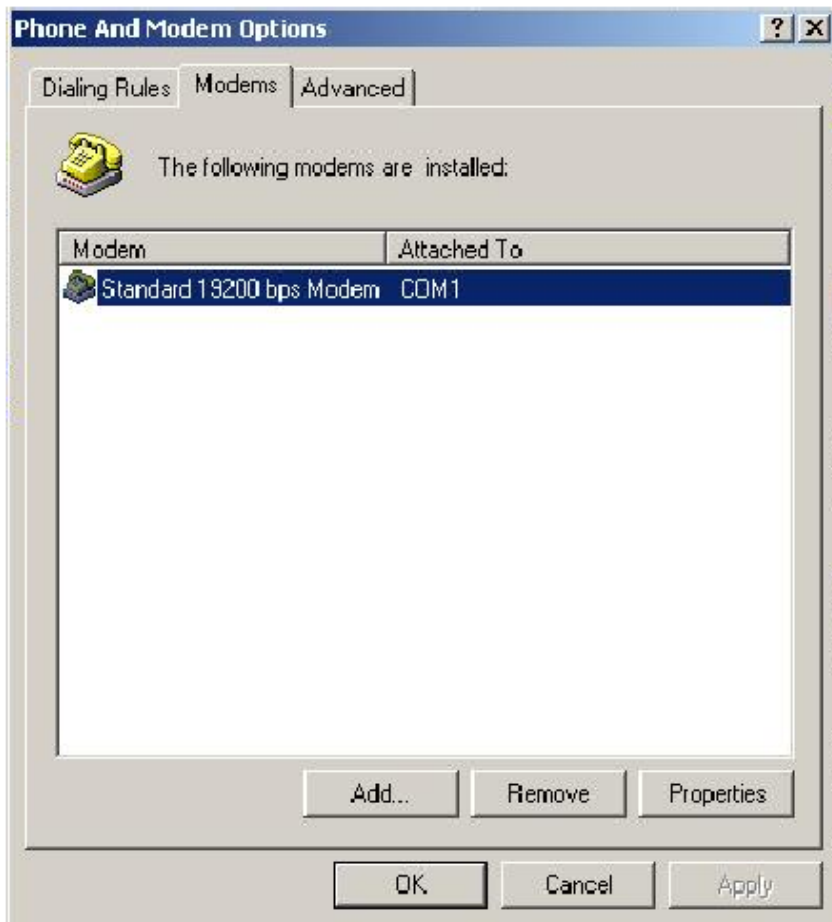
- ❖ ZTE CDMA phone configuration
 - Phone installation as a modem
 - Dialup configuration

Configuration Details

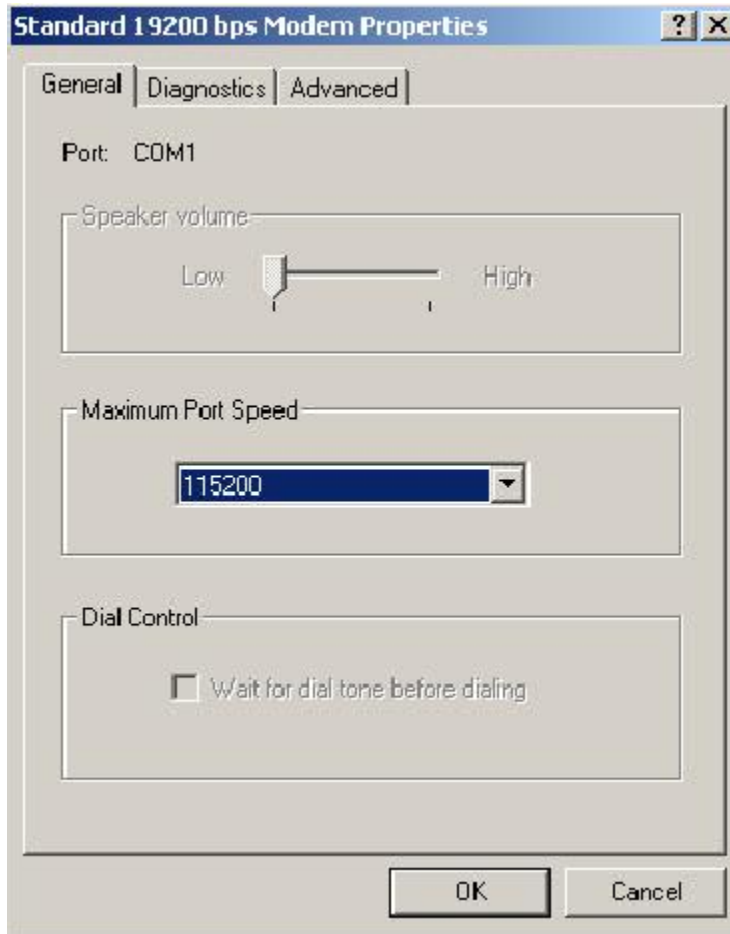
❖ AIJI CDMA phone configuration

Phone installation as a modem (For all Windows operating systems)

AIJI CDMA phone should be installed as a **19200bps** standard modem for the particular COM port.



Maximum port speed should be selected to **115200**



Phone configuration

MENU=>7.Data Service=>data Rate=>115200bps

- This should be manually done by the user.

Dialup configuration

Normal dialup connection using the dialup number #777 & @sltnet at the end of the username.



In the Properties of the dialup the used modem should be configured as follows,



115200bps should be selected as maximum speed & **Enable hardware flow control**, **Enable modem error control** check boxes should be ticked.

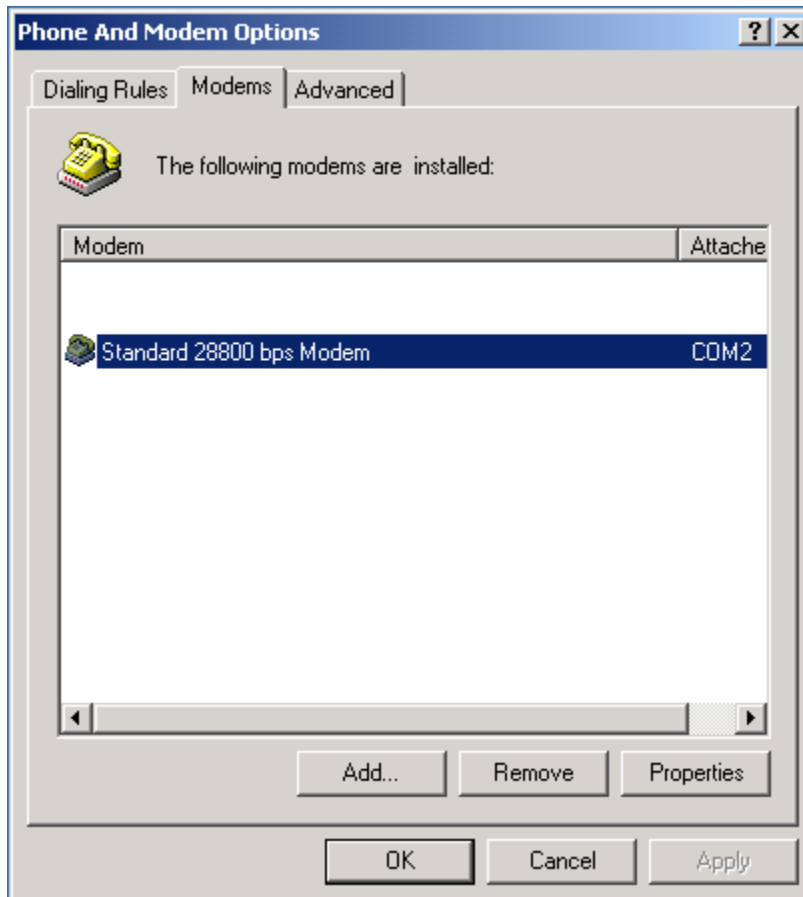


❖ ZTE CDMA phone configuration

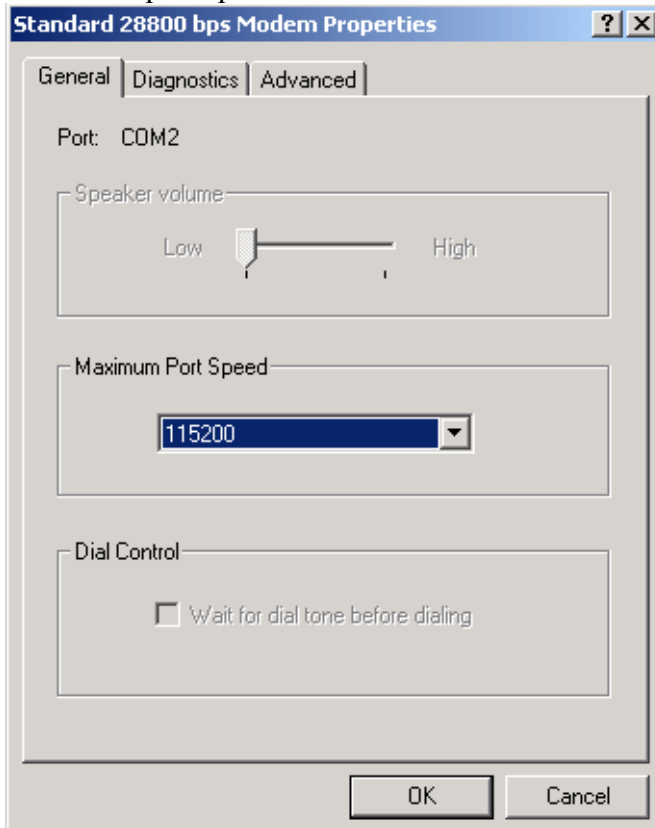
For Windows 98 & Windows 2000

Phone installation as a modem

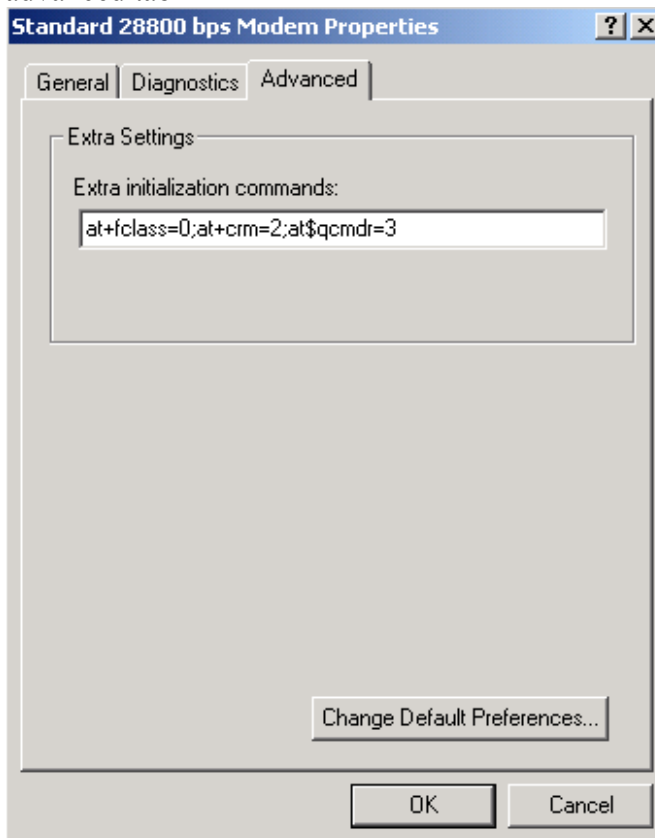
ZTE CDMA phone should be installed as a **28800bps standard modem** for the particular COM port.



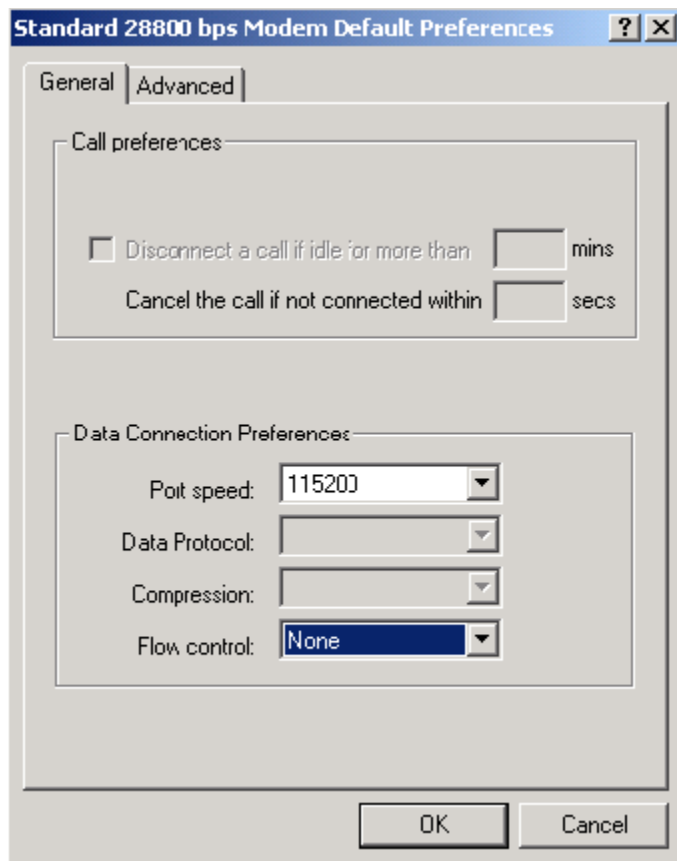
Maximum port speed should be selected to **115200**



at+fclass=0;at+crm=2;at\$qcmdr=3 should be added to the extra setting of the advanced tab



In the Default Preferences Port speed should be selected as **115200** & Flow control should be selected as **None**.

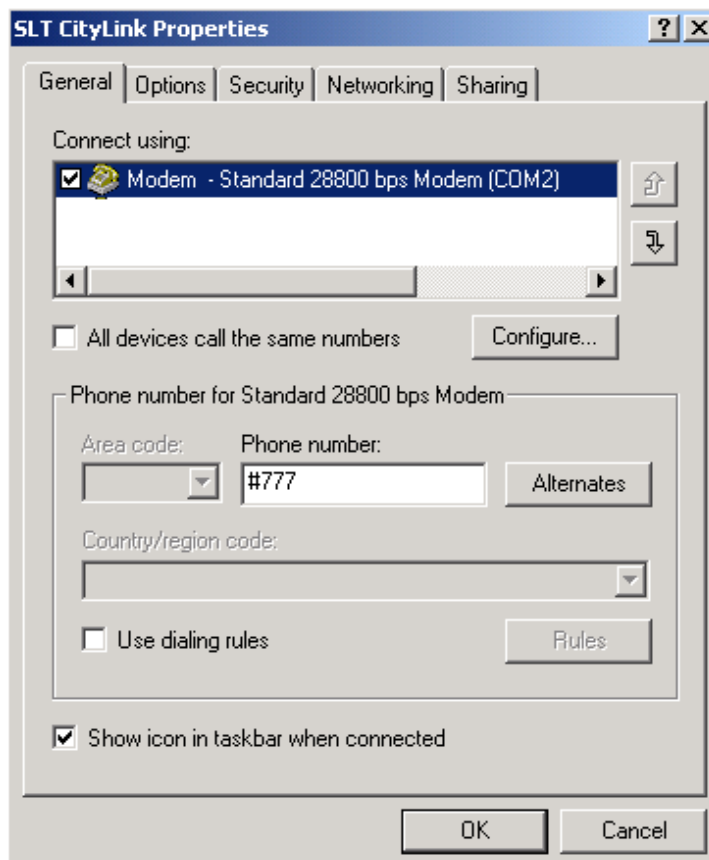


Dialup configuration

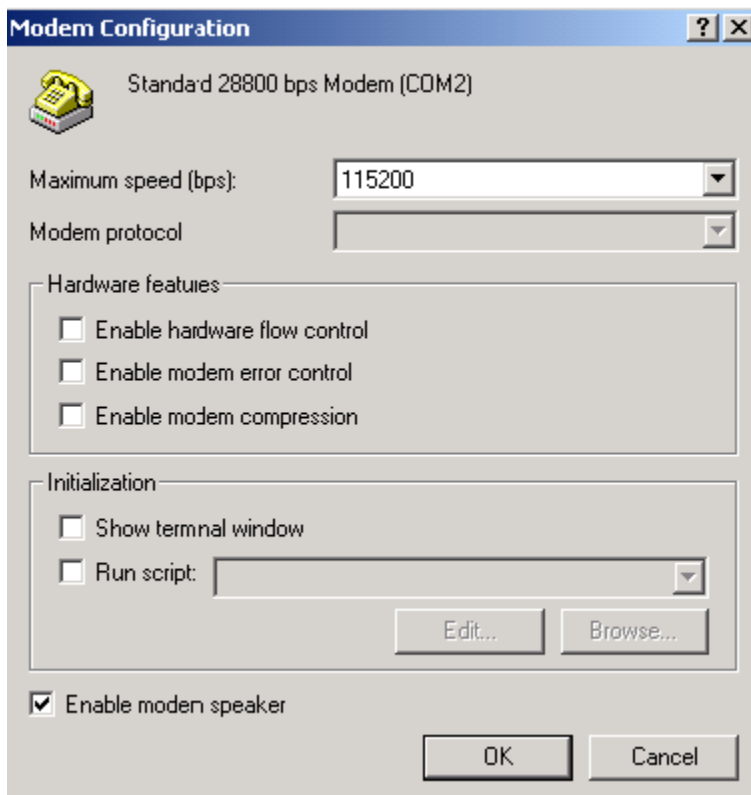
Normal dialup connection using the dialup number #777 & @sltnet at the end of the username.



In the Properties of the dialup the used modem should be configured as follows,



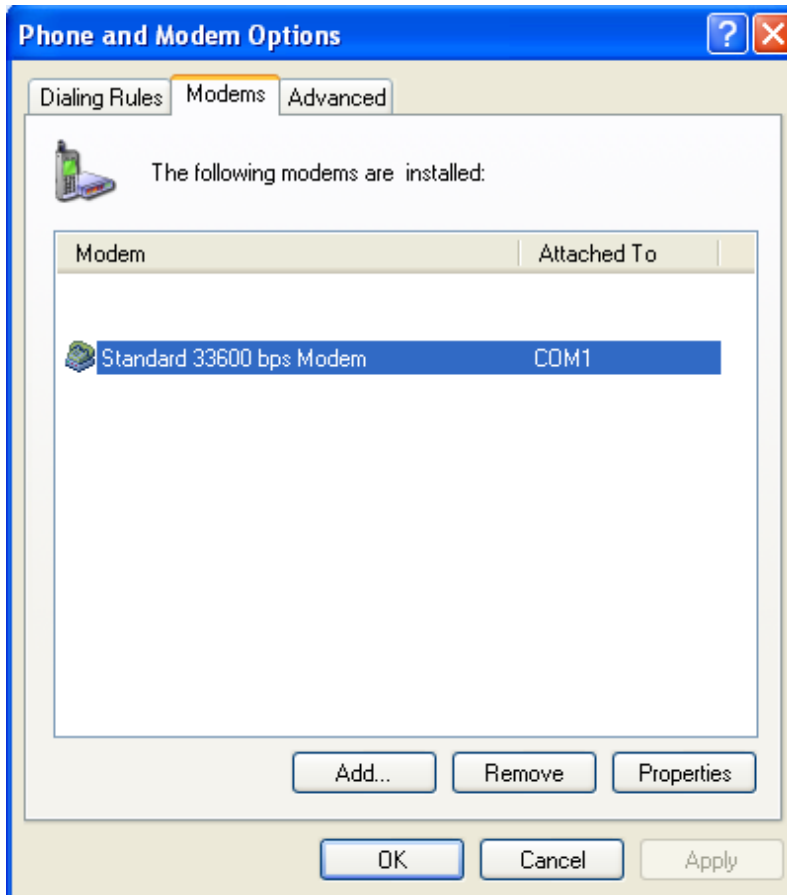
115200bps should be selected as Maximum speed & hardware flow control should be ticked off.



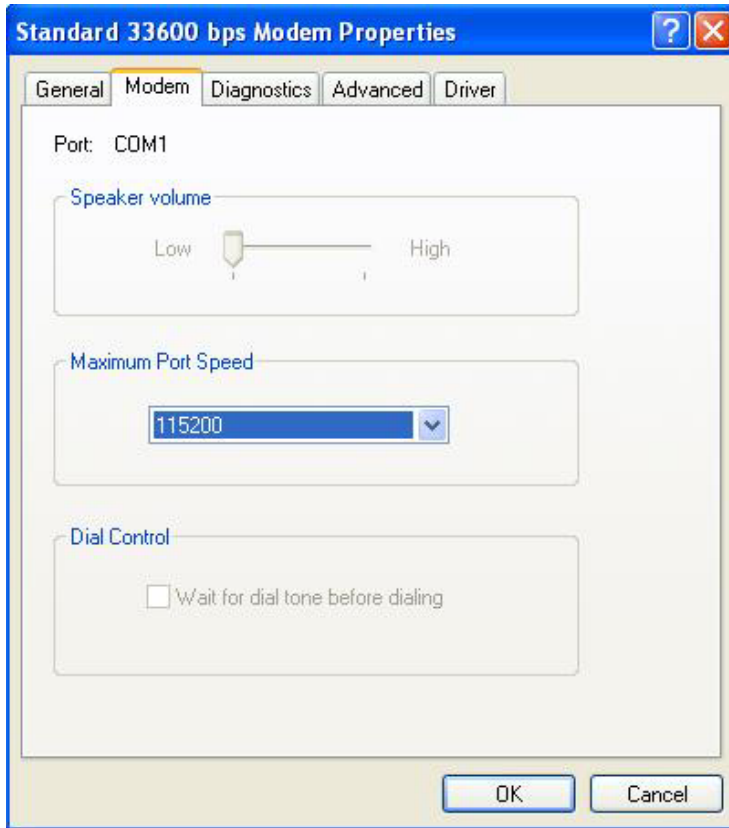
For Windows XP

Phone installation as a modem

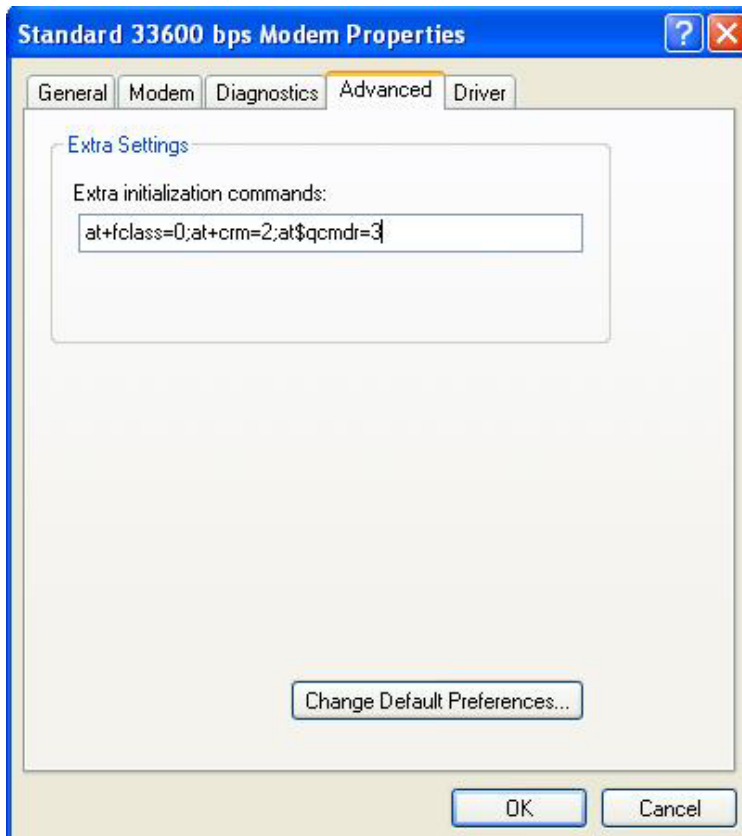
ZTE CDMA phone should be installed as a **33600bps standard modem** for the particular COM port.



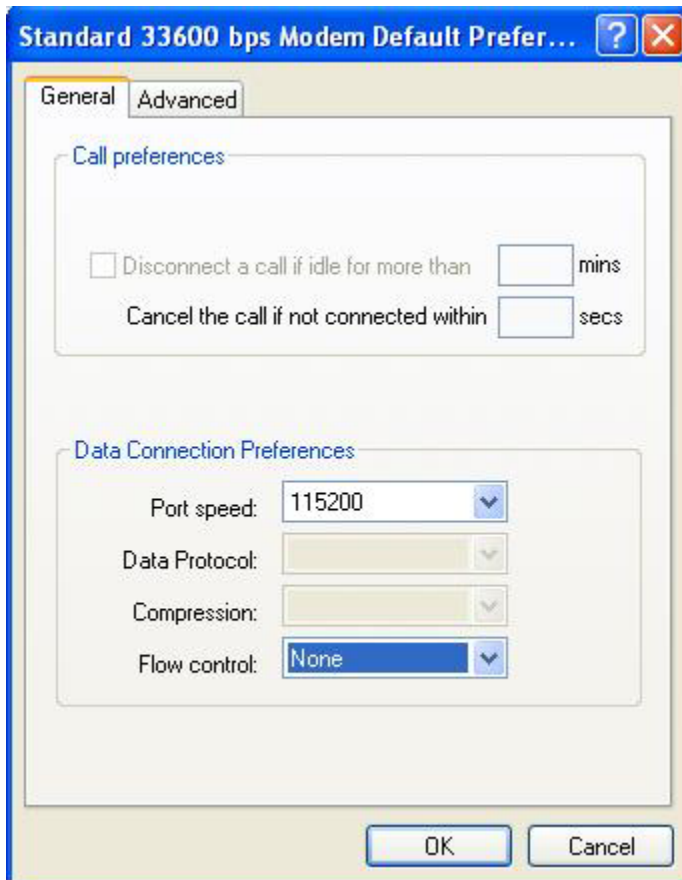
Maximum port speed should be selected to **115200**



at+fclass=0;at+crm=2;at\$qcldr=3 should be added to the extra setting of the advanced tab



In the Default Preferences Port speed should be selected as **115200** & Flow control should be selected as **None**.



Dialup configuration

Normal dialup connection using the dialup number #777 & @sltnet at the end of the username.



The screenshot shows a Windows-style dialog box titled "Connect SLT CityLink". The window has a blue title bar with a question mark icon and a close button. The main area features a graphic of two laptops with a globe between them, connected by a green arc. Below the graphic are two text input fields: "User name:" containing "username@sltnet" and "Password:" containing ten black dots. A checked checkbox is labeled "Save this user name and password for the following users:". Below it are two radio buttons: "Me only" (selected) and "Anyone who uses this computer". At the bottom, there is a "Dial:" dropdown menu showing "#777". At the very bottom are four buttons: "Dial", "Cancel", "Properties", and "Help".

Connect SLT CityLink

User name: username@sltnet

Password: ●●●●●●●●●●

Save this user name and password for the following users:

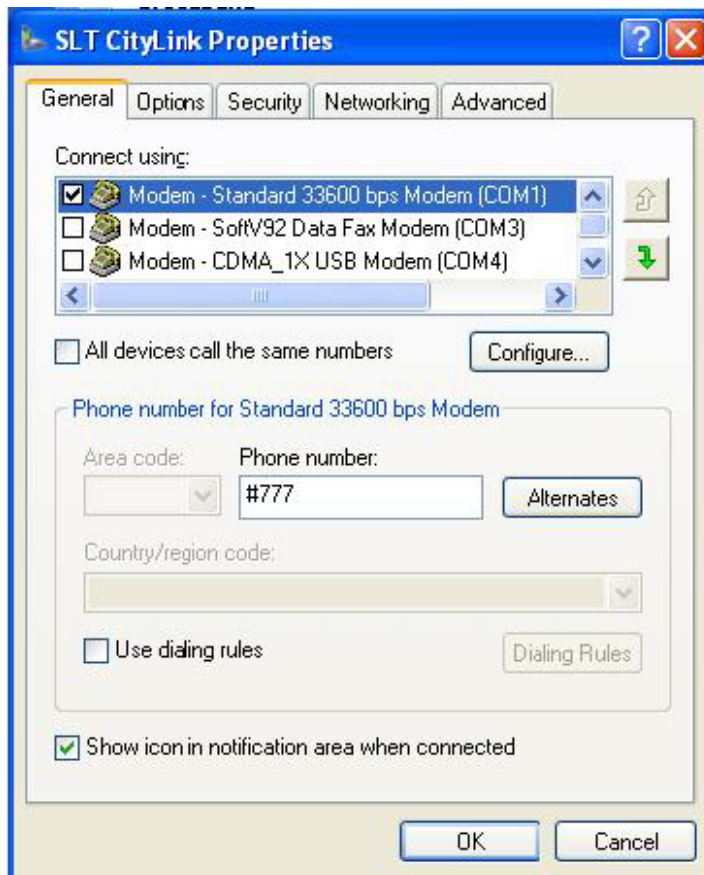
Me only

Anyone who uses this computer

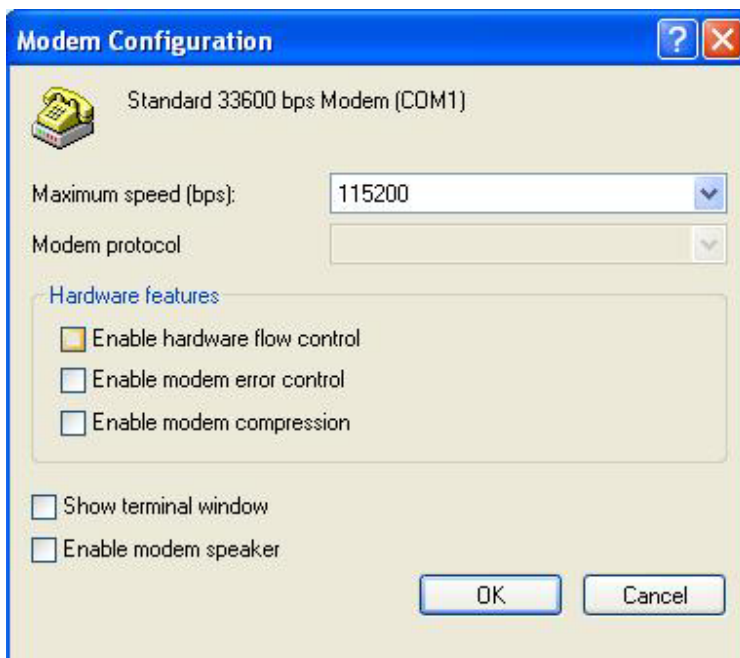
Dial: #777

Dial Cancel Properties Help

In the Properties of the dialup the used modem should be configured as follows,



115200bps should be selected as Maximum speed & hardware flow control should be ticked off.



Other installation components that should be add to the CD

- SLTNET email configuration
- Web Accelerator
- OCW
- SLTNET Messenger
- Web Browser configuration

These components are already in the existing CD, so either these components must be added to the CDMA CD or the CDMA Dialup & Modem installation links should be added to the same CD.