



CDMA CONFIGURATION

WIZARD PROPORSAL

Installation Components

- ❖ AIJI CDMA phone configuration
 - Phone installation as a modem
 - Phone configuration
 - Dialup configuration

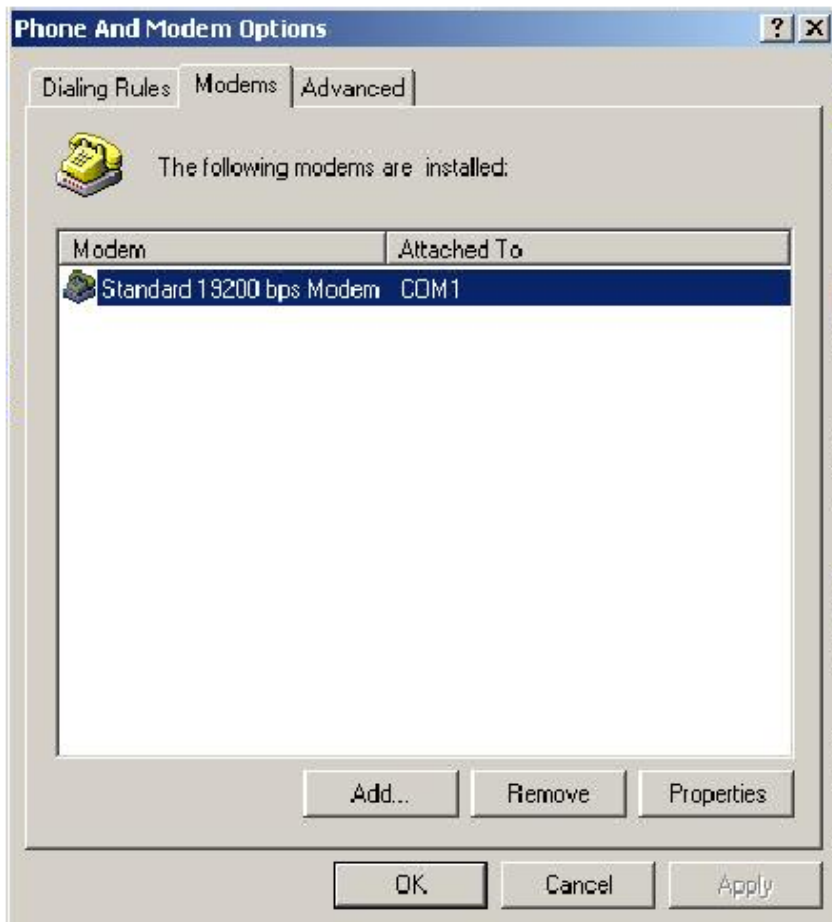
- ❖ ZTE CDMA phone configuration
 - Phone installation as a modem
 - Dialup configuration

Configuration Details

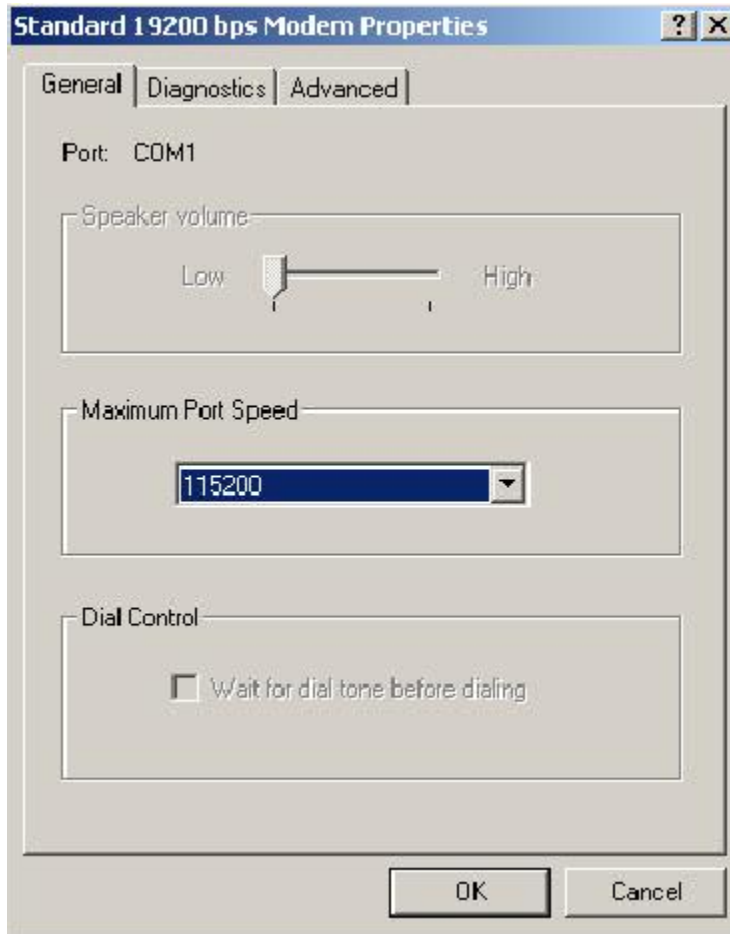
❖ AIJI CDMA phone configuration

Phone installation as a modem (For all Windows operating systems)

AIJI CDMA phone should be installed as a **19200bps** standard modem for the particular COM port.



Maximum port speed should be selected to **115200**



Phone configuration

MENU=>7.Data Service=>data Rate=>115200bps

- This should be manually done by the user.

Dialup configuration

Normal dialup connection using the dialup number #777 & @sltnet at the end of the username.



In the Properties of the dialup the used modem should be configured as follows,



115200bps should be selected as maximum speed & **Enable hardware flow control**, **Enable modem error control** check boxes should be ticked.

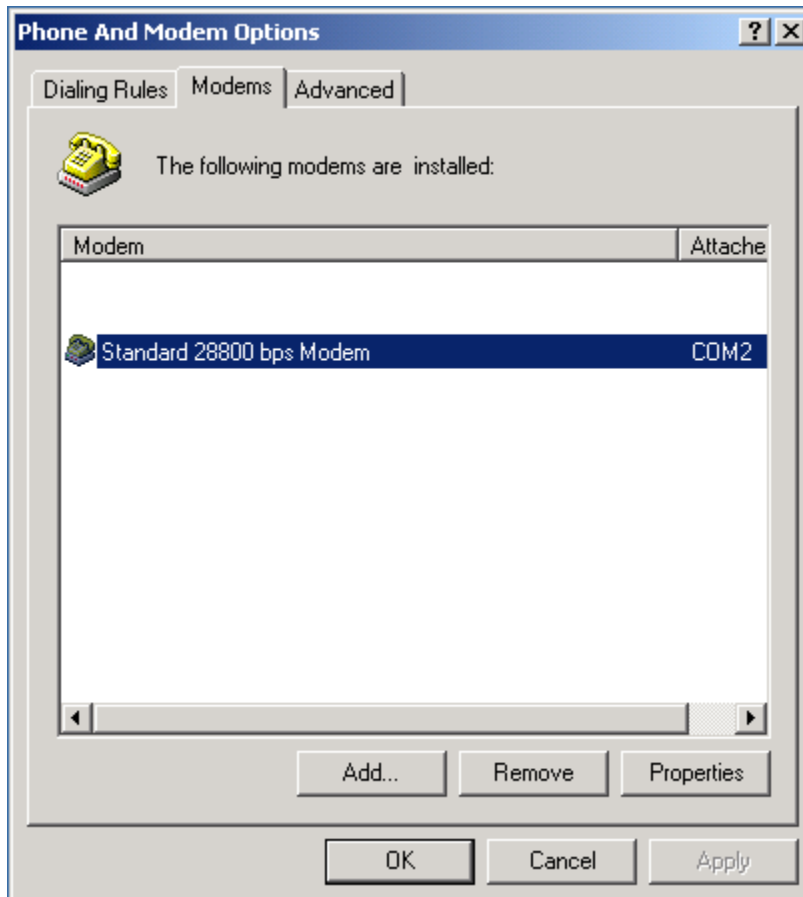


❖ ZTE CDMA phone configuration

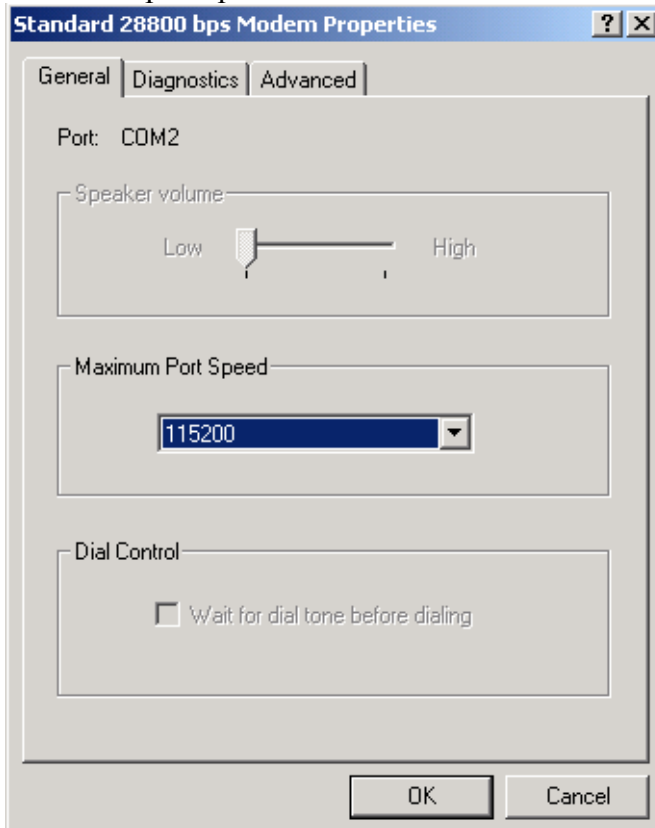
For Windows 98 & Windows 2000

Phone installation as a modem

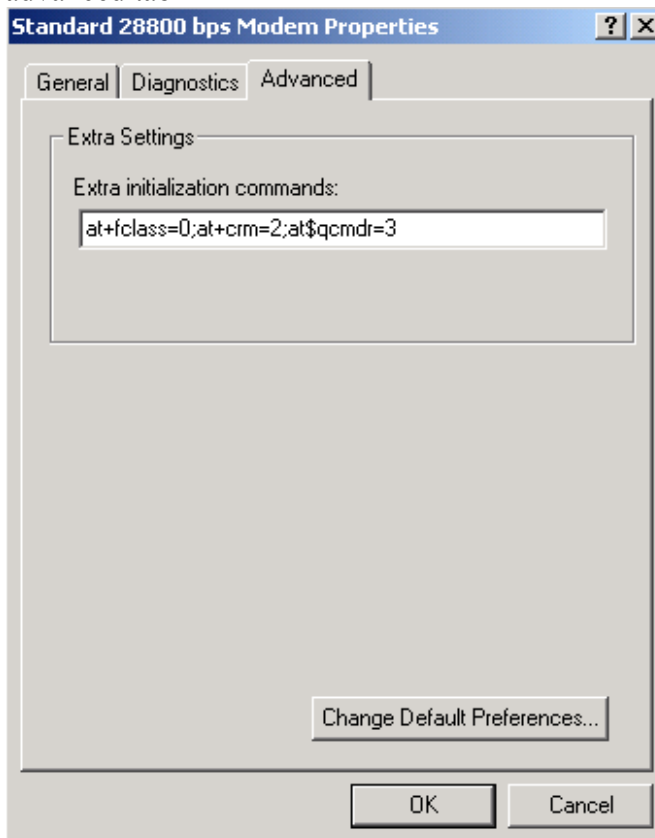
ZTE CDMA phone should be installed as a **28800bps standard modem** for the particular COM port.



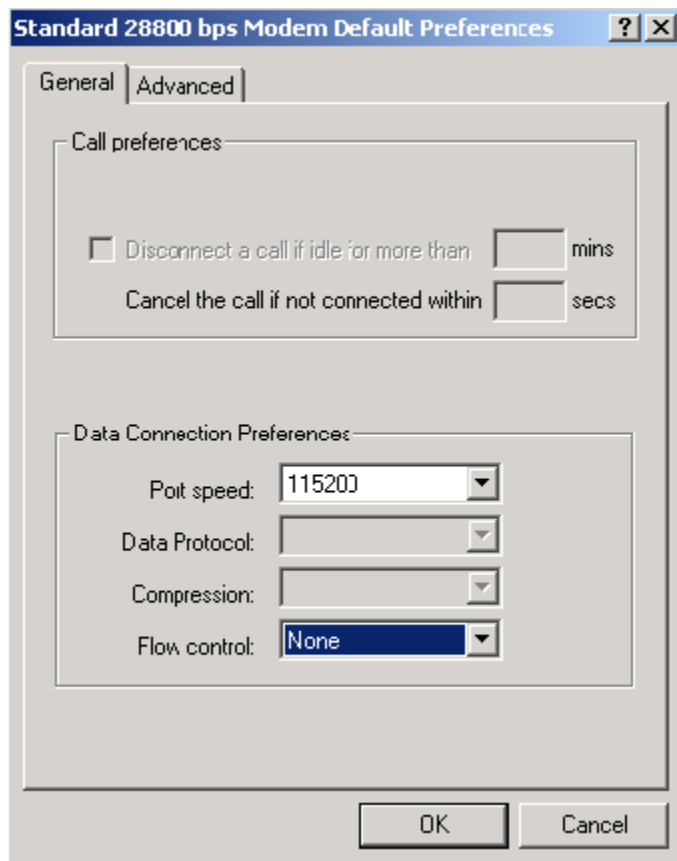
Maximum port speed should be selected to **115200**



at+fclass=0;at+crm=2;at\$qcmdr=3 should be added to the extra setting of the advanced tab



In the Default Preferences Port speed should be selected as **115200** & Flow control should be selected as **None**.

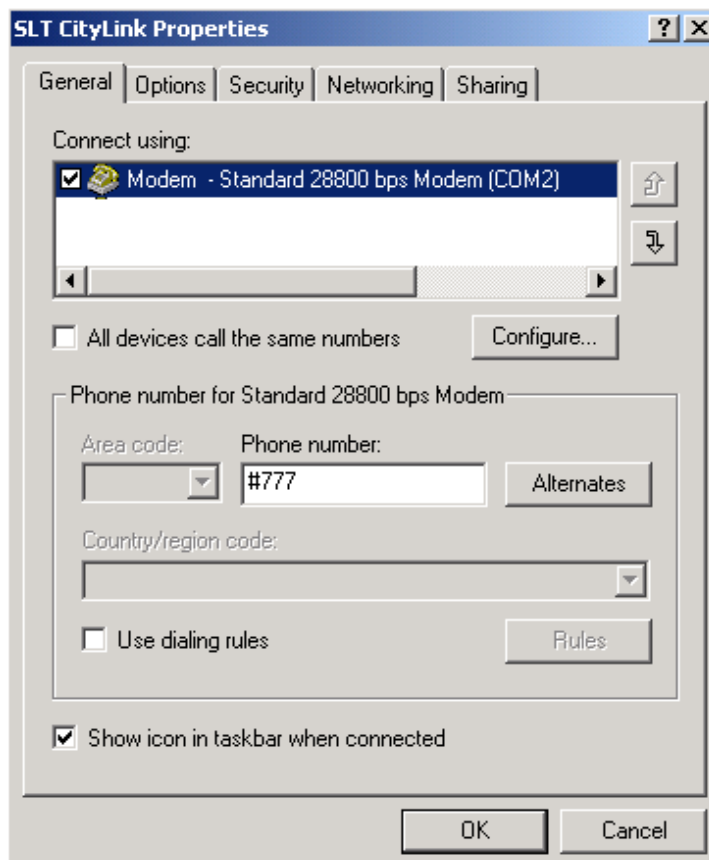


Dialup configuration

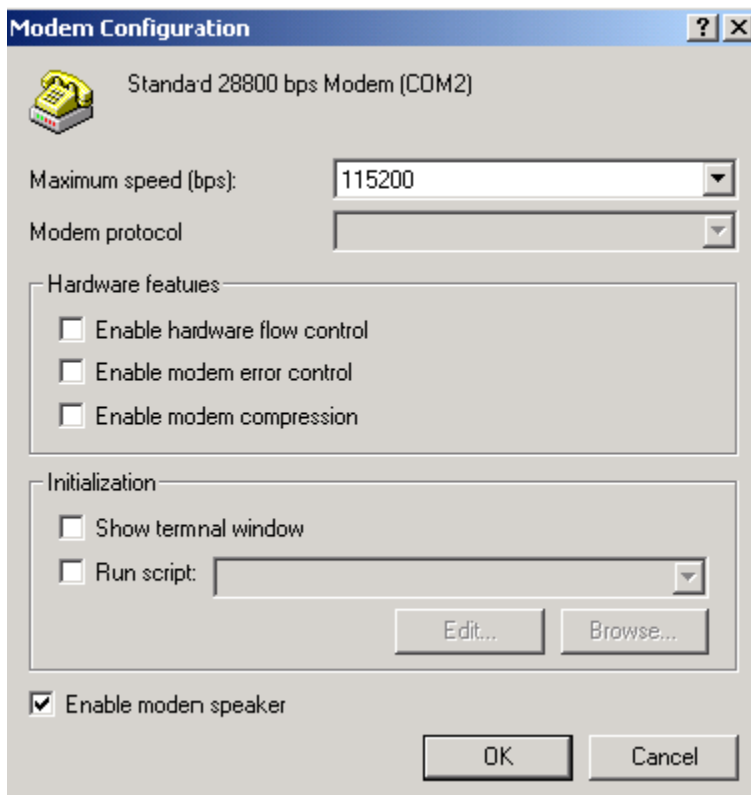
Normal dialup connection using the dialup number #777 & @sltnet at the end of the username.



In the Properties of the dialup the used modem should be configured as follows,



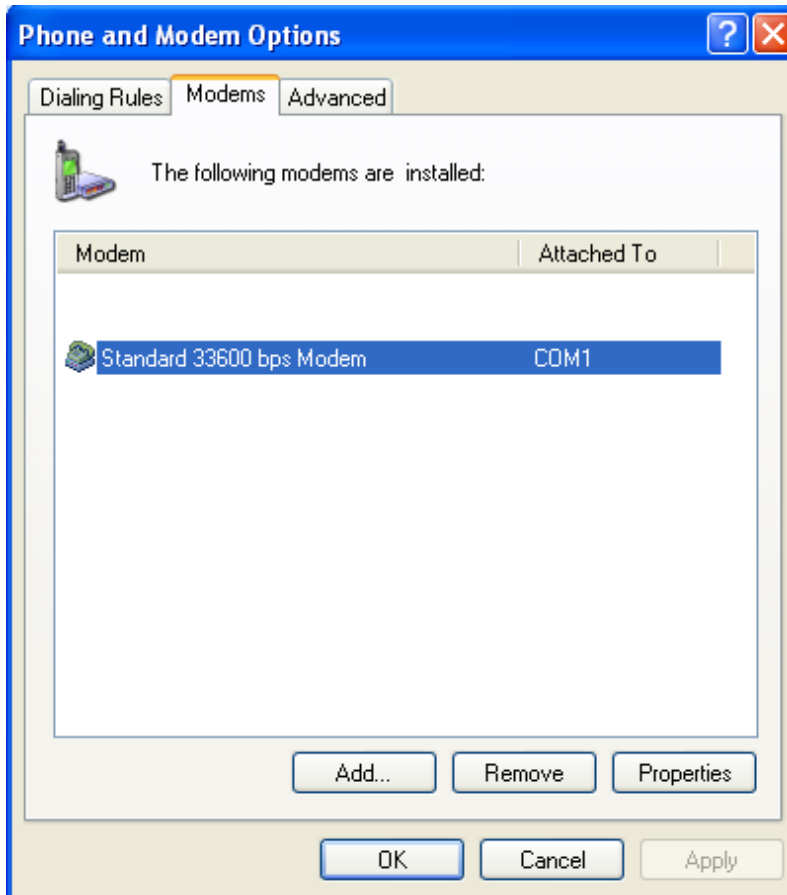
115200bps should be selected as Maximum speed & hardware flow control should be ticked off.



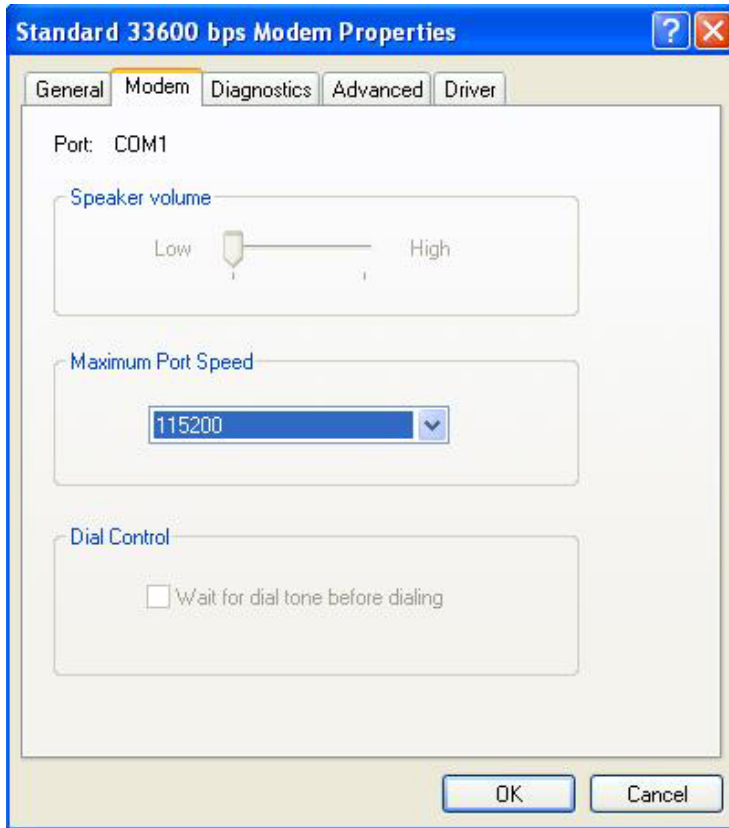
For Windows XP

Phone installation as a modem

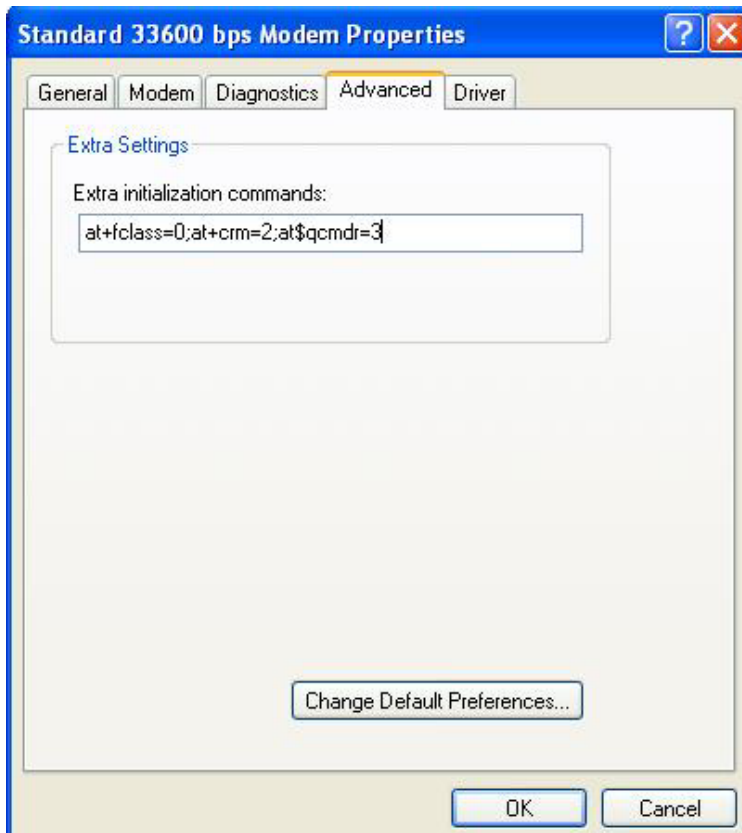
ZTE CDMA phone should be installed as a **33600bps standard modem** for the particular COM port.



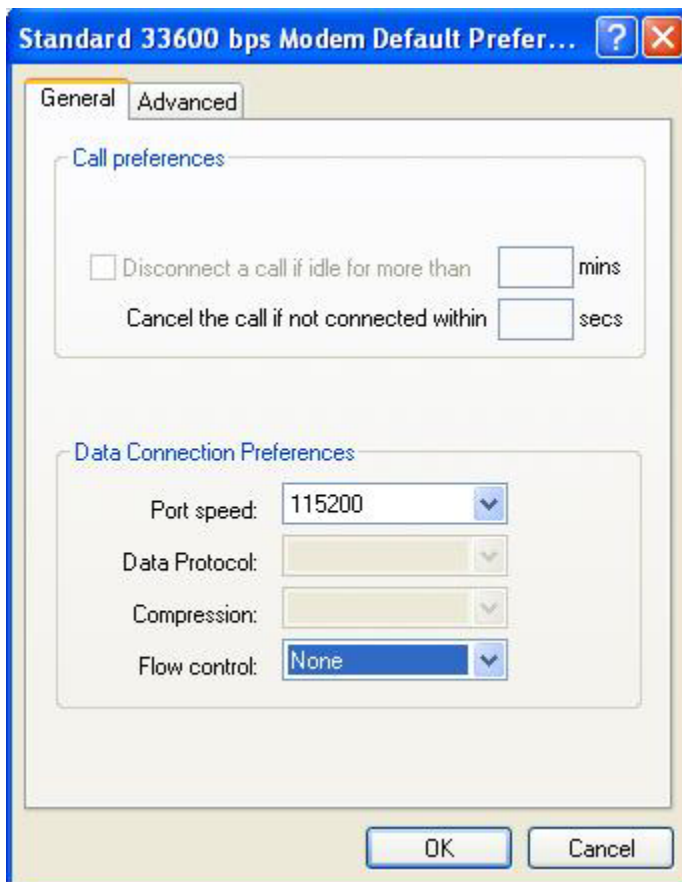
Maximum port speed should be selected to **115200**



at+fclass=0;at+crm=2;at\$qcldr=3 should be added to the extra setting of the advanced tab



In the Default Preferences Port speed should be selected as **115200** & Flow control should be selected as **None**.



Dialup configuration

Normal dialup connection using the dialup number #777 & @sltnet at the end of the username.

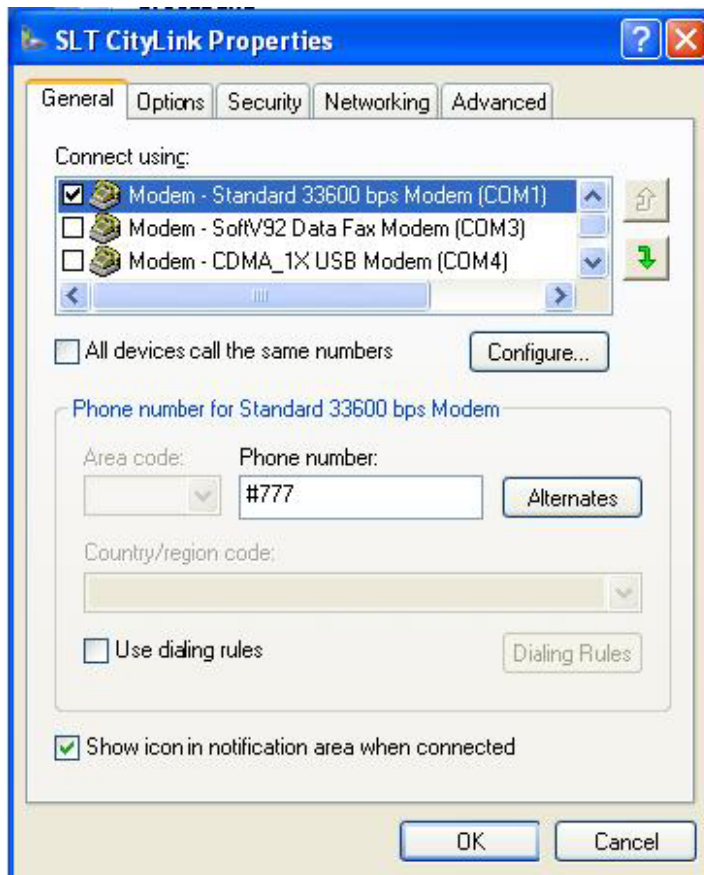


The screenshot shows a Windows-style dialog box titled "Connect SLT CityLink". The window has a blue header bar with a question mark icon and a close button. Below the header is a graphic of two laptops with a globe between them, connected by a green arc. The main area contains the following fields and options:

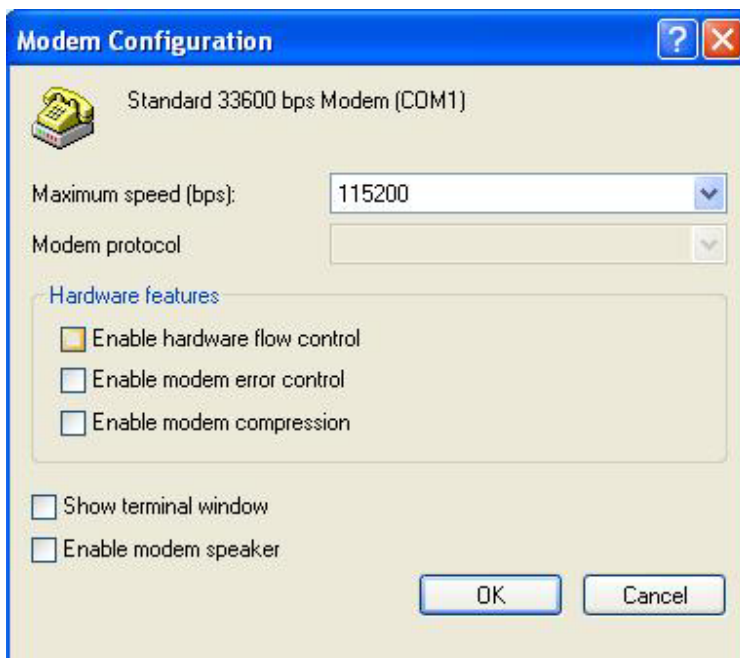
- User name:** A text box containing "username@sltnet".
- Password:** A text box filled with ten black dots.
- Save this user name and password for the following users:** A checked checkbox followed by two radio button options:
 - Me only
 - Anyone who uses this computer
- Dial:** A dropdown menu showing "#777".

At the bottom of the window are four buttons: "Dial", "Cancel", "Properties", and "Help".

In the Properties of the dialup the used modem should be configured as follows,



115200bps should be selected as Maximum speed & hardware flow control should be ticked off.



Other installation components that should be add to the CD

- SLTNET email configuration
- Web Accelerator
- OCW
- SLTNET Messenger
- Web Browser configuration

These components are already in the existing CD, so either these components must be added to the CDMA CD or the CDMA Dialup & Modem installation links should be added to the same CD.