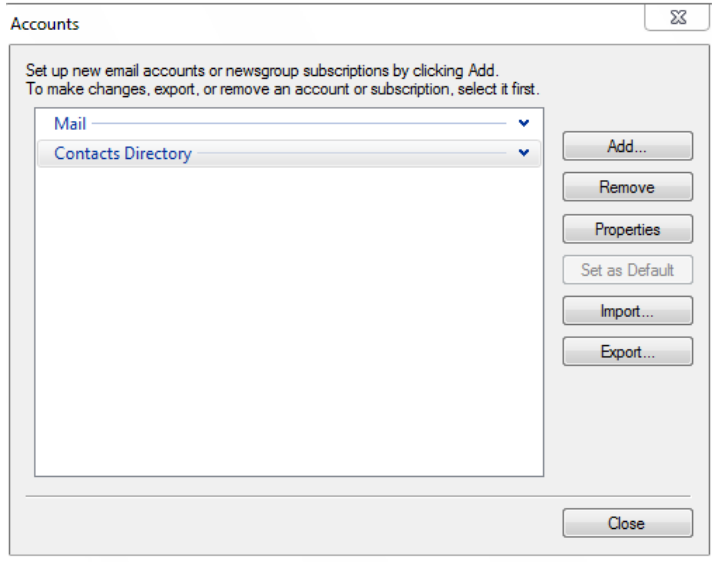
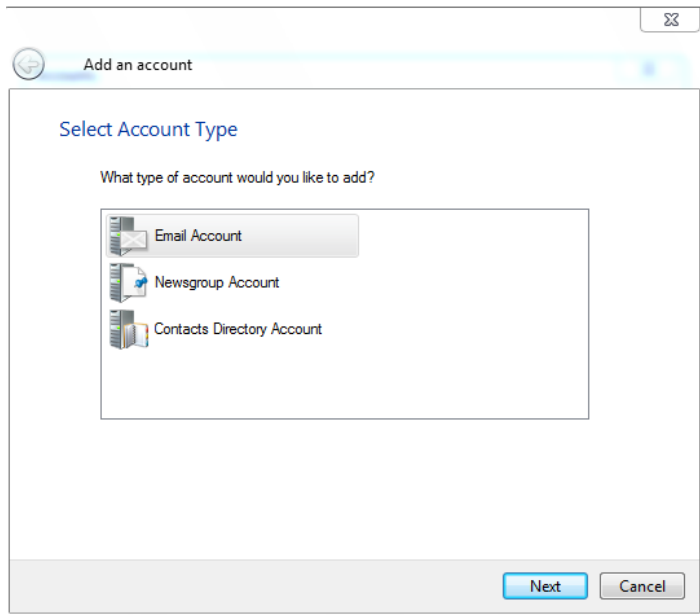


Windows Live Mail

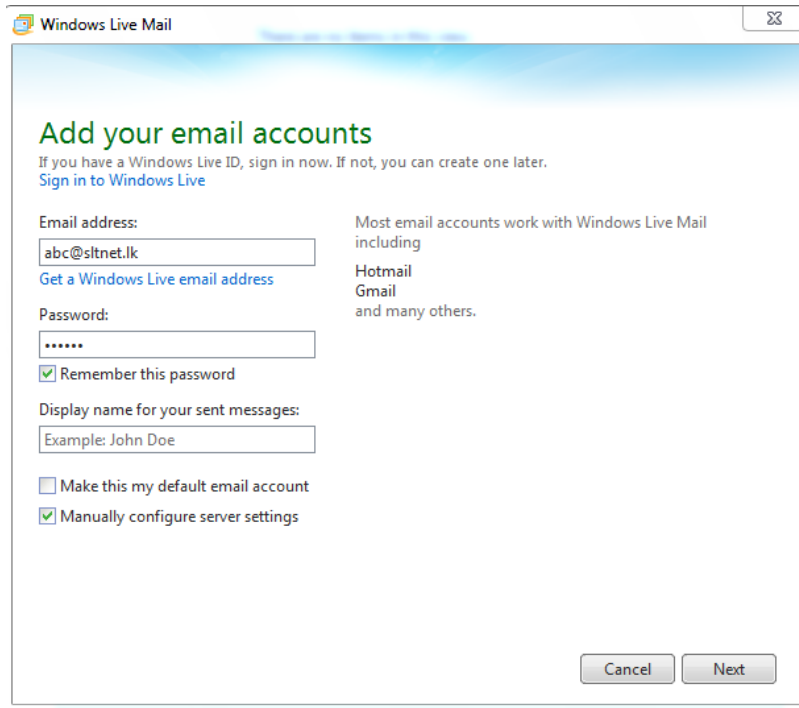
Go To Email Accounts -> "Add"



Go to -> "Email Accounts"



Enter your SLTnet email “User Name” and “Password”

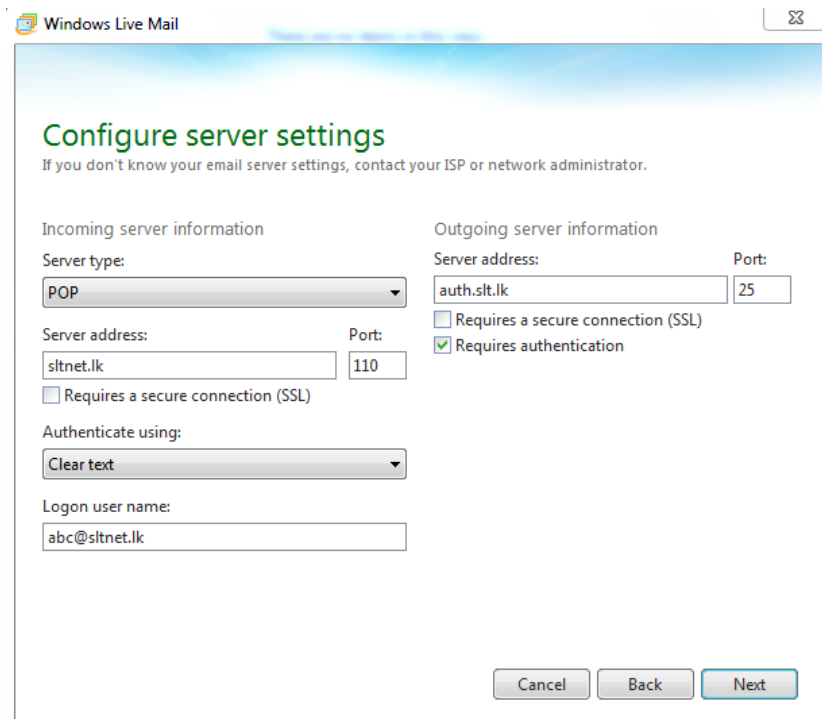


The screenshot shows the 'Add your email accounts' dialog box in Windows Live Mail. The title bar reads 'Windows Live Mail'. The main heading is 'Add your email accounts' in green. Below it, a sub-heading says 'If you have a Windows Live ID, sign in now. If not, you can create one later.' with a link 'Sign in to Windows Live'. The form contains the following fields and options:

- Email address:** A text box containing 'abc@sltnet.lk'. Below it is a link 'Get a Windows Live email address'.
- Password:** A text box with six dots. Below it is a checked checkbox 'Remember this password'.
- Display name for your sent messages:** A text box containing 'Example: John Doe'.
- Two checkboxes at the bottom: 'Make this my default email account' (unchecked) and 'Manually configure server settings' (checked).

On the right side, there is a text block: 'Most email accounts work with Windows Live Mail including Hotmail Gmail and many others.' At the bottom right are 'Cancel' and 'Next' buttons.

Enter “Server Settings” as follows

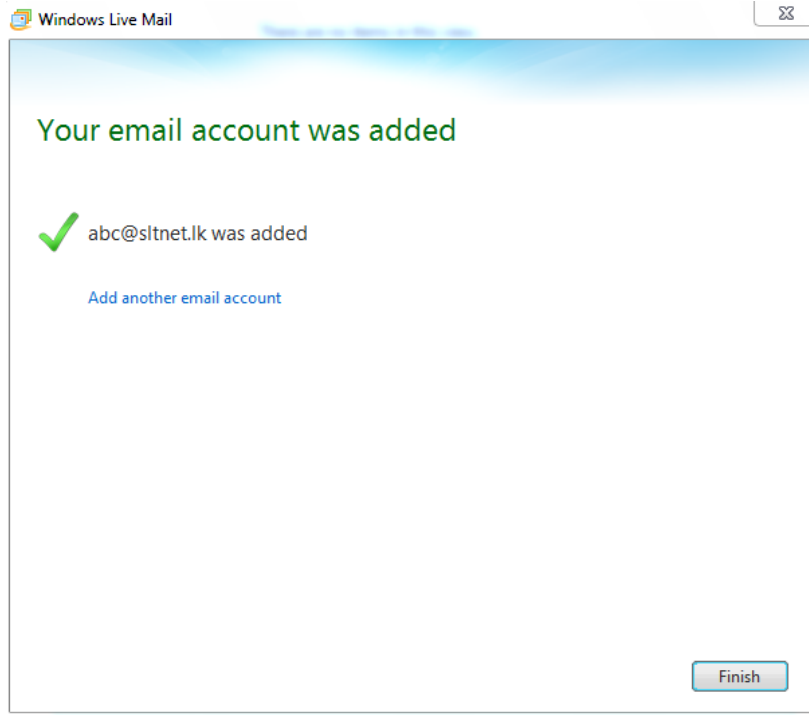


The screenshot shows the 'Configure server settings' dialog box in Windows Live Mail. The title bar reads 'Windows Live Mail'. The main heading is 'Configure server settings' in green. Below it, a sub-heading says 'If you don't know your email server settings, contact your ISP or network administrator.' The form is divided into two columns:

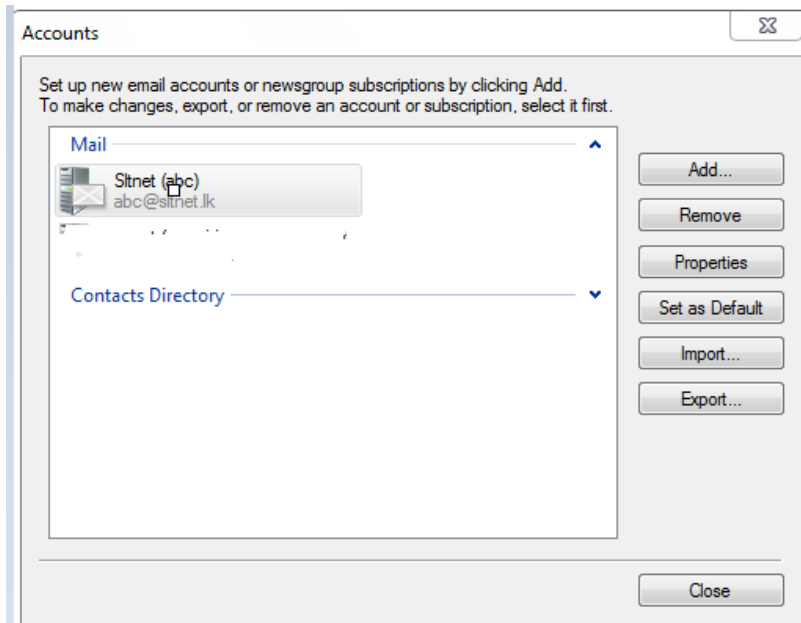
- Incoming server information:**
 - Server type:** A dropdown menu set to 'POP'.
 - Server address:** A text box containing 'sltnet.lk'.
 - Port:** A text box containing '110'.
 - Checkbox 'Requires a secure connection (SSL)' (unchecked).
 - Authenticate using:** A dropdown menu set to 'Clear text'.
 - Ligon user name:** A text box containing 'abc@sltnet.lk'.
- Outgoing server information:**
 - Server address:** A text box containing 'auth.slt.lk'.
 - Port:** A text box containing '25'.
 - Checkbox 'Requires a secure connection (SSL)' (unchecked).
 - Checked checkbox 'Requires authentication'.

At the bottom are 'Cancel', 'Back', and 'Next' buttons.

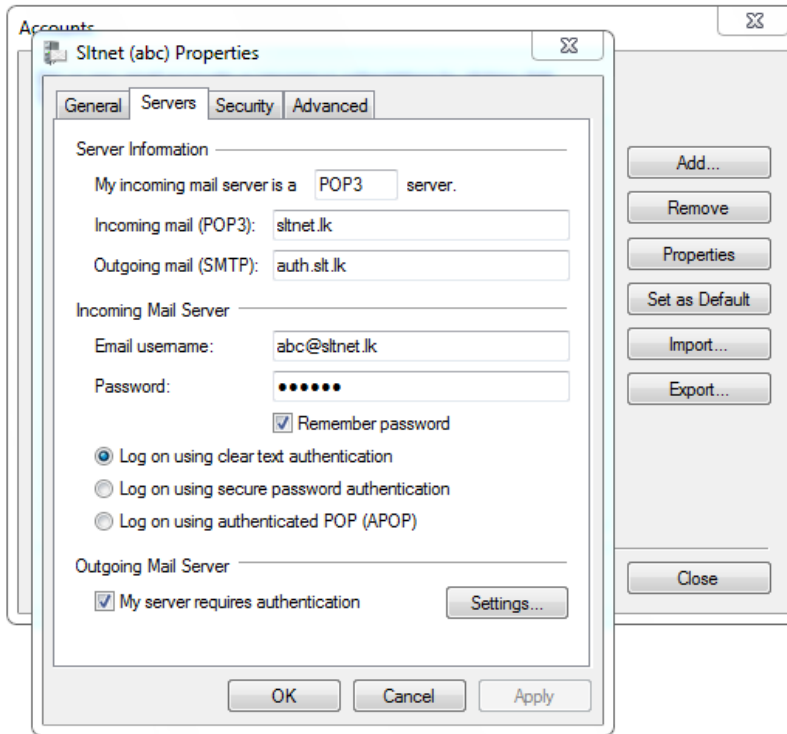
Click "Finish". Configuration not completed few more steps to go!



Go to -> "Properties"



Review your settings and go to -> "Settings"



Select outgoing mail server authentication same as incoming server or re-enter your SLTnet credentials.

