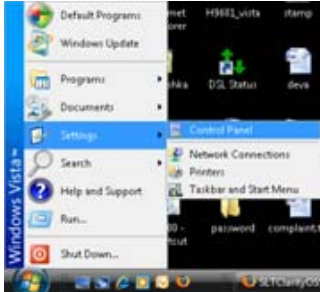
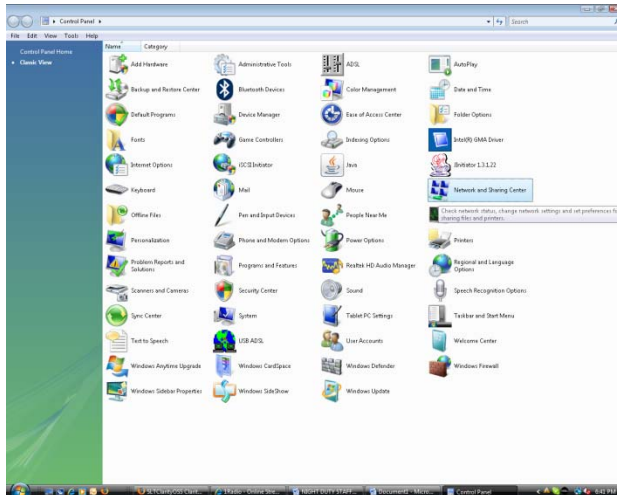


## Set up a Dial up Connection in Windows Vista

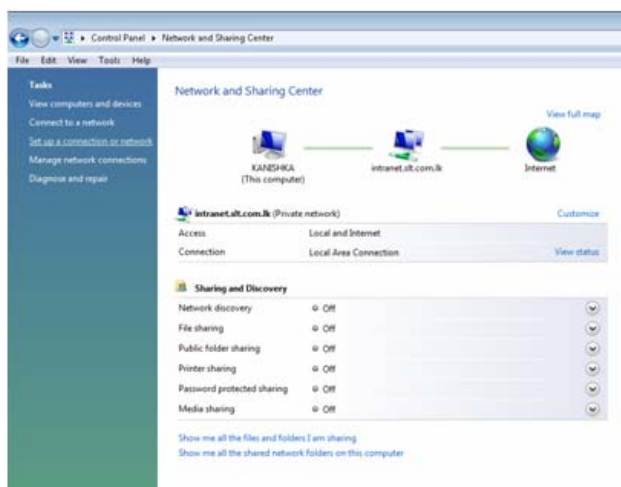
1) Start → Control Panel ->



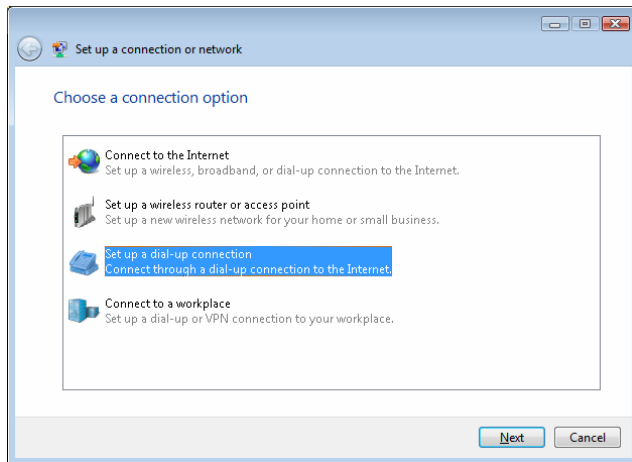
2) Double click Network and Sharing centre



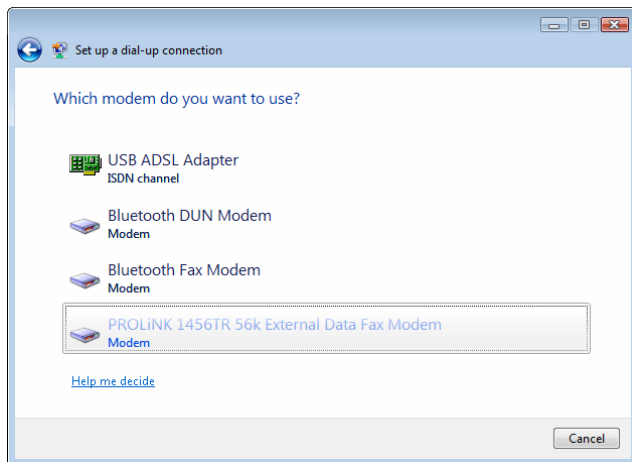
3) Then click on Set up a connection or Network (listed in Left Panel)



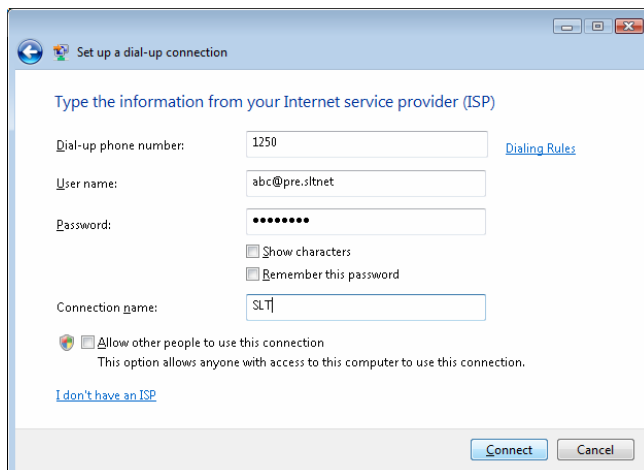
4) Select Set up a dial up connection -> Next ->



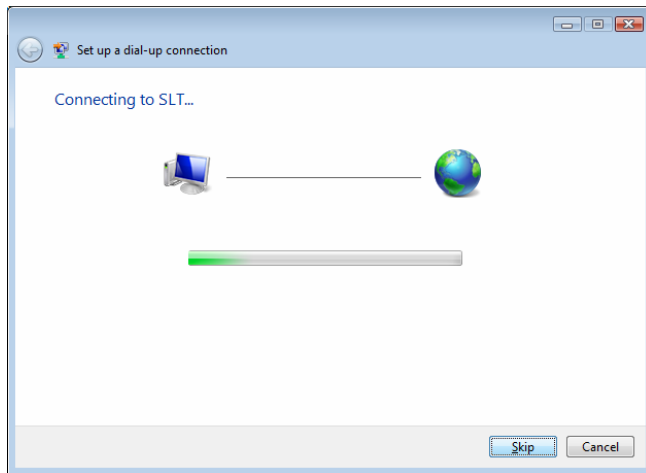
5) Select the appropriate modem type **you have installed** from the list from the next dialog box.



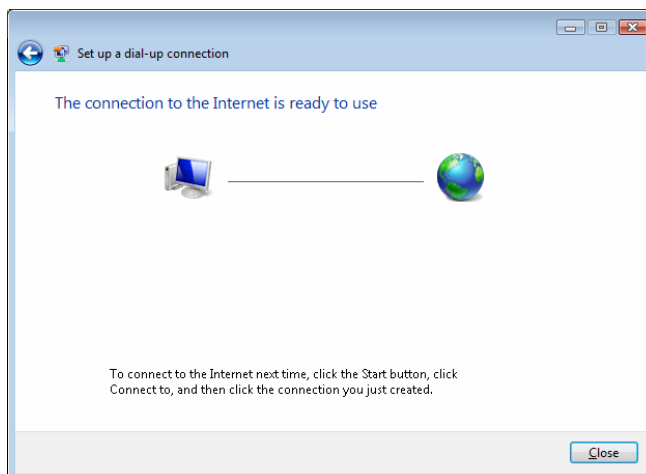
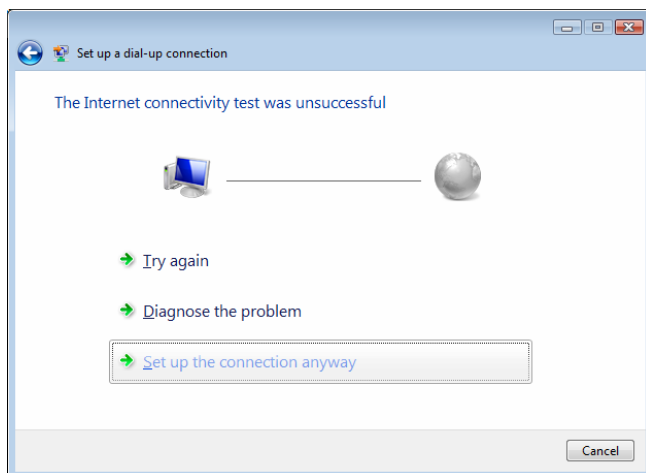
6) Fill the information required in the next dialog box. And connect ->



7) The following window will appear. Then click **Skip** ->



8) Then click on Set up connection anyway ->



9) You can either connect from the  
Start → Connect to → <Connection name>

**OR**

Start → Control Panel → Network Connections →

Right click on the connection and

Connect →

